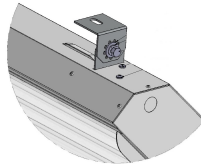




# 8 ft Linear LED Tennis Lights

Direct/Indirect Courtside Lighting For Indoor Tennis Courts



Adjustable Angle Bracket for Mount to Unistrut

Project	
Type:	Approved By:

Lumen ID	Wattage	Delivered Lumens
36000	240	36,623

Delivered lumens based on 5000K CCT.



## APPLICATIONS

Direct-indirect LED lighting designed exclusively for indoor tennis courts. Grouped together as a complete court system, the 8' LED Court Side fixture provides 35% uplight to illuminate from floor to ceiling. Adjustable angle brackets attached to the fixture mount directly to unistrut for easy point and aim installation at measured intervals.

## CONSTRUCTION

.032" white pre-painted aluminum housing and inner tray, knockouts provided for power feed, diffused acrylic lens.

Fixture Dimensions: 92.47" x 12.07" x 4.43", approx 21 lbs.

## SYSTEM SPECIFICATIONS

36,000 nominal lumens (240w). High flux linear LED modules: 80+ CRI, CCT: 3500K, 4000K or 5000K. Constant current LED power supplies: power factor > 0.9, THD < 20%, universal voltage 120-277v, 347-480v.

## DIMMING & CONTROLS

0-10v dim to 0%, dim by line voltage, wireless dimming with fixture control sensor and controller switch, gateway for online access.

## RATINGS & WARRANTY

Temperature rated from -4°F to 122°F (-20°C to 50°C), service life > 100,000 hours (L90), 5 year product warranty, CSA listed, DLC listed, RoHS compliant, BAA/TAA/BABA compliant. All fixtures are made in the USA and bench tested prior to shipping.

## ORDERING INFORMATION

Series	Length	Arrays	Lumen ID	CCT	Lens	Voltage
1st Source LED High Bay Series	LHB8 = 8 ft	6	36000	35K 40K 50K	DAC = Diffused Acrylic	U = Universal 120-277v 3 = 347v 4 = 480v

Mounting Options	Dimming	Control Accessories	Additional Accessories
ABM = Angle Bracket Mount <i>Consult factory for custom mounting.</i>	D0 = 0-10v Dim to 0% W/D0 = Wireless 0-10v Dim to 0%* DLV = Dim by Line Voltage (120v Only) * Requires fixture control sensor and wireless controller switch.	Wireless Fixture Control Sensor Wireless Controller Switch Wireless Controller Switchbox Wireless Control Gateway	C6 = 6 ft 16/3 SO Cord P = Plug (Specify NEMA)