

## 2x4 Pickleball Court Light with Panel Appearance



| Model  | Lumen ID | Wattage | Delivered Lumens | LPW |
|--------|----------|---------|------------------|-----|
| RCxx24 | 26000    | 191     | 26,500           | 139 |

### Ordering Information

| RSD-RCxx24                                     | Lumen ID   | CCT  | Lens                   | Voltage                    |
|--|--|--|------------------------|----------------------------|
| RSD-RCSM24 =<br>Surface/Chain Mount            | 26000  | 40K  | D92 = Diffused Acrylic | U = Universal 120-277v     |
| RSD-RCFM24 =<br>Recessed Frame Out             | Consult Factory For<br>Additional Lumen<br>Packages                                    | 50K  |                        | 3 = 347v (Consult Factory) |
| RSD-RCTB24 =<br>Recessed T-Bar Lay-In          |  |  |                        | 4 = 480v (Consult Factory) |
| Mounting Options                               | Dimming & Controls   | Accessories  |                        |                            |
| Lay In or Frame Out<br>No Designation Required | D0 = Dim to Off<br>D10 = Dim to 10%<br>DLV = Dim by Line Voltage<br>MS = Motion Sensor | C = Cord (Specify Length)<br>P = Plug (Specify NEMA)<br>EQ = Seismic Anti Sway Clips<br>EM/2300 = EM Driver 2300 Lm<br>EM/2900 = EM Driver 2900 Lm |                        |                            |
| SM/CC = Universal Surface<br>or Chain Mount    | Consult Factory For<br>Wireless Control Options  |  |                        |                            |

|         |              |
|---------|--------------|
| Project |              |
| Type:   | Approved By: |

### APPLICATIONS

High output 2x4 court light with a smooth, even panel light appearance. Non glare with even distribution for competitive play.

### CONSTRUCTION

.040" white pre-painted aluminum housing, D92 diffused high impact polycarbonate lens. All fixtures are manufactured in the USA.

### MOUNTING

Lay-In for t-bar grid ceiling or universal mounting for surface, chain or cable. Suspension brackets included

### SYSTEM SPECIFICATIONS

High flux linear LED modules: 80+ CRI, CCT: 3500K, 4000K or 5000K. Constant current LED power supplies: power factor > 0.9, THD < 20%, universal voltage 120-277v, 347-480v available.

### DIMMING & CONTROLS

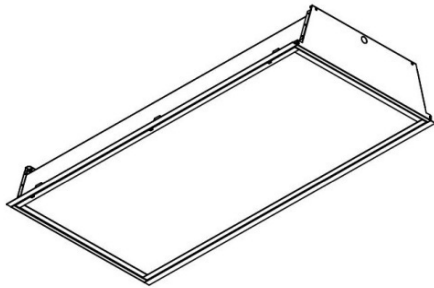
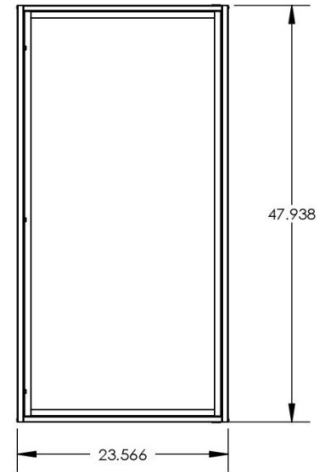
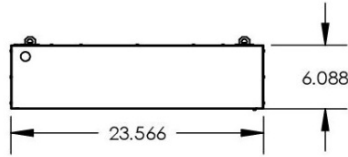
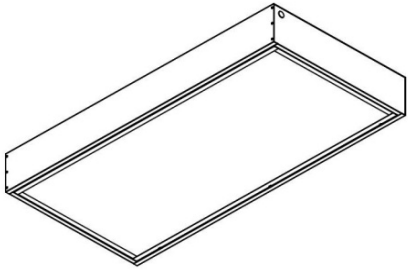
Optional wireless dimming may be controlled by a remote switch, PC or handheld device. Standard dimming options are 0-10v low voltage (10%), dim to off (0%) or dim by line voltage.

### RATINGS & WARRANTY

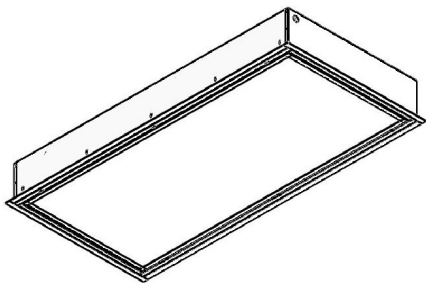
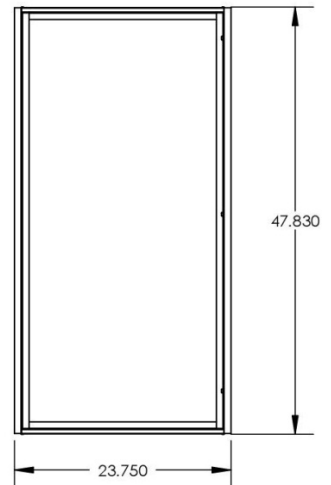
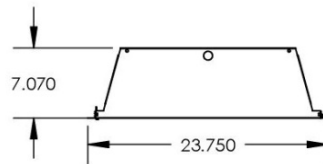
Temperature rated from -20°C to 50°C (-4°F to 122°F), service life > 100,000 hours (L90), CSA listed, 5 year product warranty.

**DIMENSIONS: Pickleball Court 2x4 (PA)**

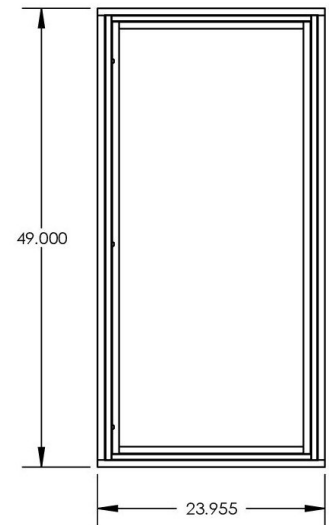
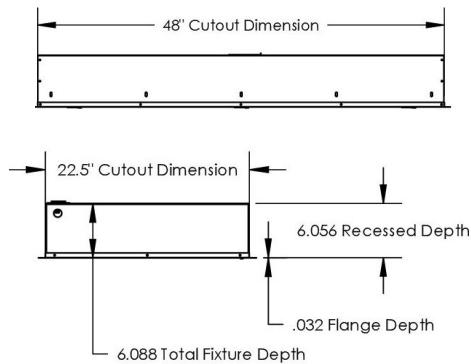
**RCSM24 Universal Surface or Chain Mount**



**RCFTB24 Recessed Lay-In for T-Bar Grid Ceiling**



**RCFM24 Recessed Frame Out for Hard Ceiling**



Made in the USA

